



MERSEYSIDE RECYCLING & WASTE AUTHORITY

**MERSEYSIDE... A PLACE
WHERE NOTHING IS WASTED**

WHO ARE WE?

- Laura Gilmore – Community Engagement and Development Officer
- MRWA – Merseyside Recycling and Waste Authority
- Liverpool City Region Zero Waste
- Liverpool City Region Circular Economy Club



ABOUT MRWA:

- Manages the waste collected by 6 district councils.
- 14 Household Recycling Centers
- 4 Waste Transfer Stations (Bidston, Gillmoss, Huyton and Southport)
- 2 Material Recovery Facility (Bidston, Gillmoss)
- 7 Closed landfill sites

Last year, we handled 765,000 tonnes of waste





- Zero Waste 2040
- Zero Net Carbon 2040



Q: What happens to the rubbish that you put in your bins?

Your Wastes Journey

Household Waste Centers

Kerbside;

- Garden Waste
- Recycling
- General Waste/ Refuse



Garden Waste

- Sent direct to a composting facility
- Checked, shredded and turned.
- 8 – 16 weeks



RECYCLING

2 Material Recovery Facilities – Bidston/Gillmoss

- approx. 13.5 tonnes/35 tonnes per hour
- Diverts 63,000 tonnes per year

Recycling Discovery Centre



Let's [recycle[✓]right.org.uk](https://www.recycleright.org.uk)



RECYCLING



- Paper and Card
- Tin/Aluminum Food & Drink Cans
- Glass Packaging
- Plastic Bottles



- Black bag waste
- Plastic bags, cling film or plastic padding
 - Metal objects, shredded paper or polystyrene
- Juice cartons (Tetra Pak)
 - Food or liquids
- Yoghurt pots, plastic tubs, food trays or foil containers
- Textiles, clothes and shoes
 - Paint tins
 - Electrical items
 - Wood



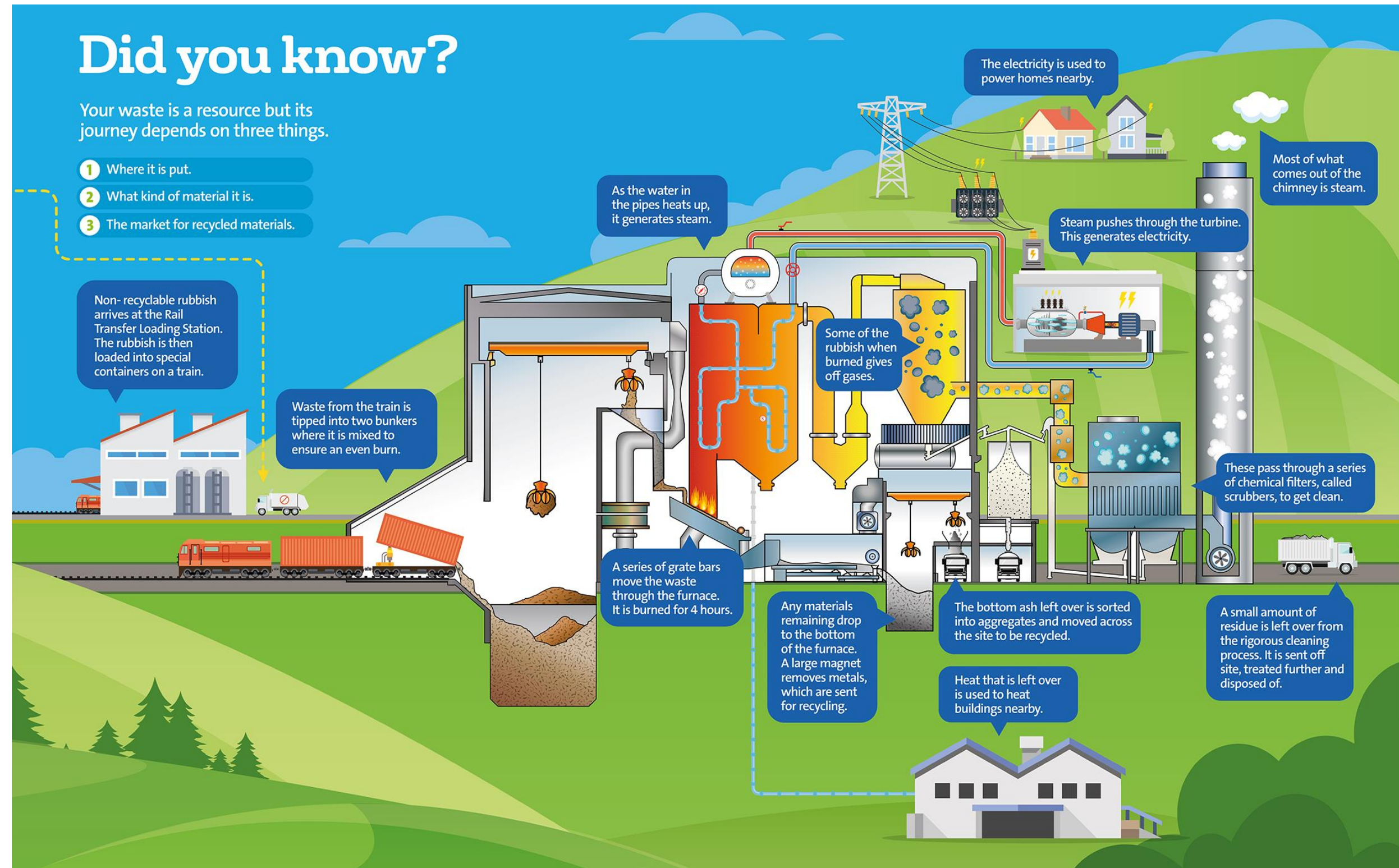
General Waste

4 Rail Transfer Sites

- 80,000 wheelie bins of waste
- 9 trains

1 Energy Recovery Site

- generates enough electricity to power the equivalent of 63,000 homes.



FOCUS AREAS

FOOD WASTE

An average family throws away £800 of food each year!

- 1/3 of household waste bins are made up from food waste
- 134,000 tonnes of food is thrown away every year
- Kerbside analysis found 70% of the food in our bins was unopened.

WEE (Waste Electronic Equipment) & Batteries

- 2 million tonnes of WEE items are discarded across the UK a year
- 600 million batteries are binned a year.
- These contain none renewable materials like lead, nickel, zinc, and cobalt.
- Fire Risks

REUSE

- Reuse is a great way to keep resources in circulation
 - Furniture
 - Clothing
 - Food Waste
- Estimated UK households could have made £17 billion through second-hand resale markets. That's about £620 per household



HOW TO...
Organise a Clothes Swishing Event



HOW TO...
Compost at Home



Merseyside Recycling & Waste Authority

Community Fund

In partnership with Veolia



WERE NOT ALL RUBBISH:

Education

- Southport Eco Centre
- Recycling Discovery Centre's
- School Curriculum Involvement
- Community Events & Speaking

Community Fund

- £165,000 funding each year
- Up to £30,000 per project

Thanks for listening!

Any Questions?